

MEU 2012 – Urban Energy Management

Development of a decision-aid tool for urban energy management for the purpose of marketing it

Project management

Prof. Jean-Pierre Rey
Alain Duc

Information

jpierre.rey@hevs.ch

Keywords

- Energy
- Urban planning
- Information system

Our skills

Silverlight development

Valorisation

Marketing of the tool by a company based in the Valais

Partners

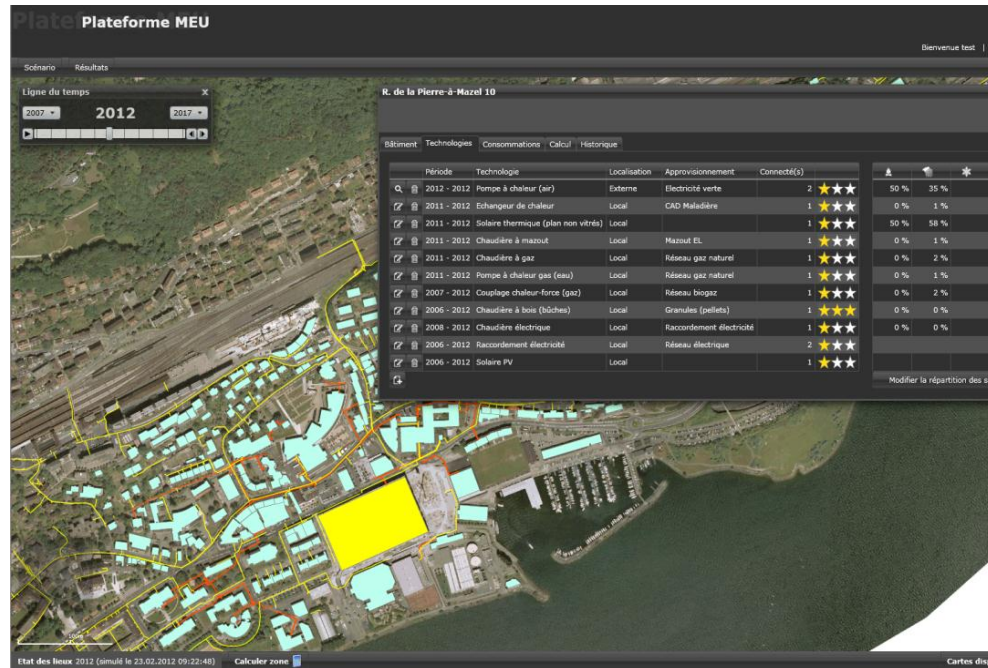
- CREM – Centre de Recherches Energétiques et Municipales
- EPFL Energy Center
- University of Applied Sciences and Arts Western Switzerland Valais – Institute of Systems Engineering

Finance

The Ark Energy

Schedule

03/2012 – 02/2013



The MEU 2012 project aims at developing the first version of the MEU platform into a robust **functional prototype** for the purpose of marketing it.

MEU is a **decision-aid tool** for town planners and decision-makers who develop strategies. It considers the aspects of both energy demand and provision for suburbs in view of developing scenarios that fulfil the **political objectives** regarding energy and climate change defined by the public authorities.

The Institute of Business Information Systems is mainly responsible for **the graphic interfaces and the software development** that will exploit the intelligence contained in the database developed by the EPFL. In particular, the software architecture will need to be analysed and improvements be proposed to ensure the long-term operability of the system, its generic use and the integration of other types of data.

