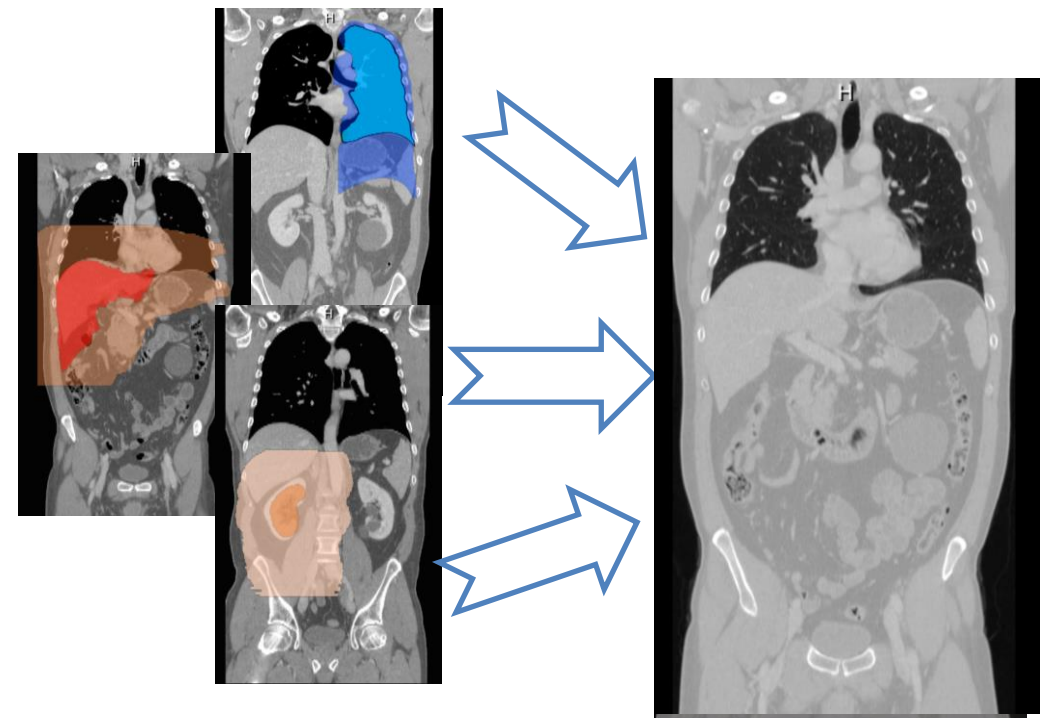


Multi Atlas-Based Segmentation with Data Driven Refinement

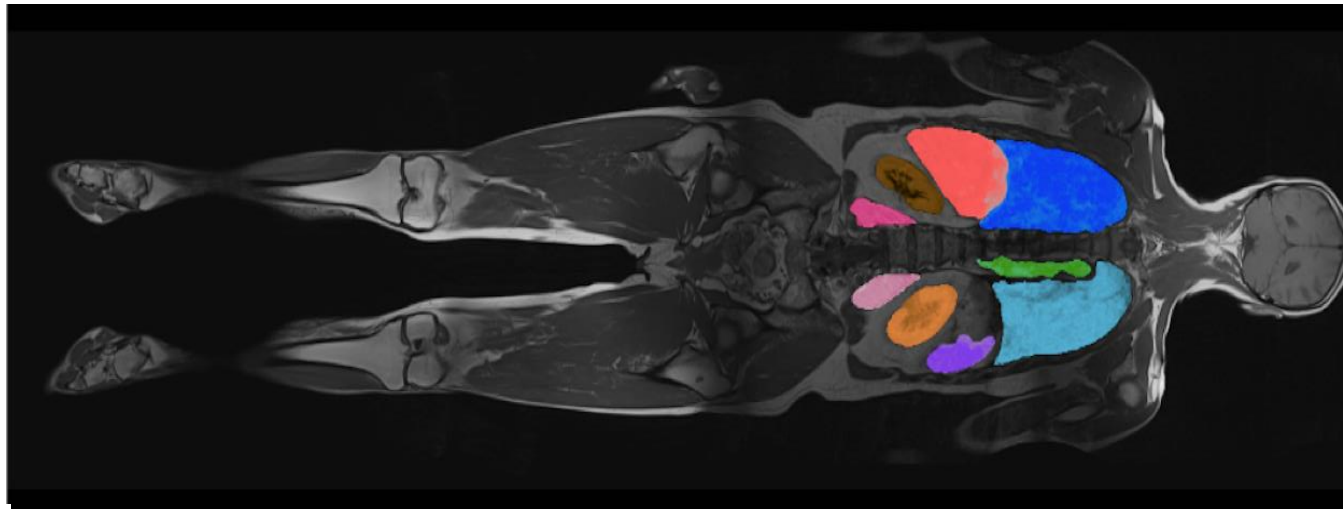
Oscar A. Jiménez-del-Toro
and Henning Müller

University of Applied Sciences
Western Switzerland
(HES-SO)



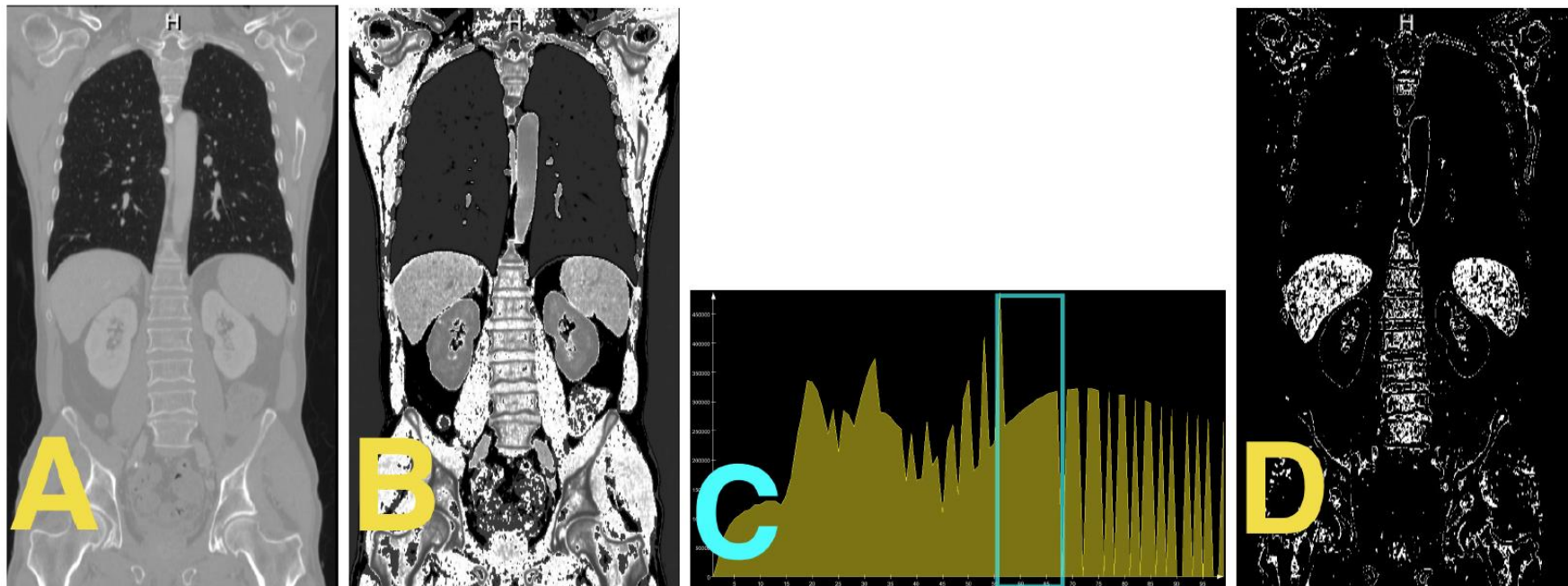
Research Setup

- VISCERAL project: organ segmentation
- Multiple anatomical structures in multiple medical imaging modalities (CT, MR ...)
- Accurate large scale data analysis techniques are needed



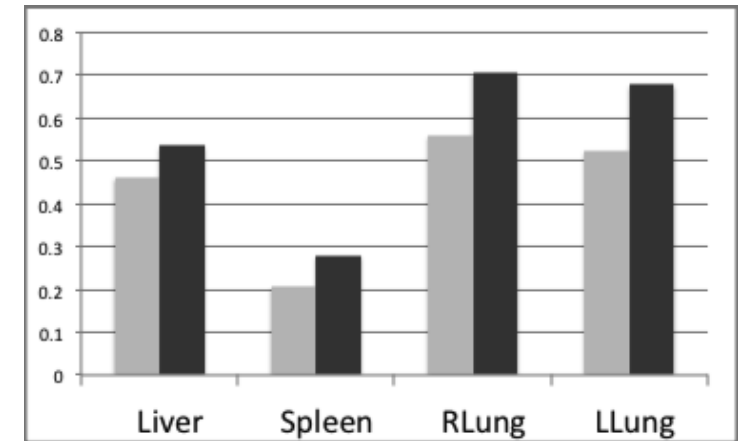
Method

- Image registration
 - Increases spatial correlation between two images
- Data-driven label refinement



Results

- Quantitative improvement in contrast-enhanced CT for 4 organs
- Qualitative results in multiple imaging modalities:
 - whole-body CT
 - whole-body MR
 - contrast-enhanced MR



Thank you for your
attention!

